

# QUICK MOVE-IN HOMES



BATHS 2.5 | BEDS 3 | SINGLE FAMILY HOME

NOW \$329,900

## 4278 BEAR RIDGE DRIVE HOUSE SPRINGS, MO 63051

Introducing a New McBride Home the Berwick, a 2-story home w/ 3 beds, 2.5 baths, ready this Winter! Perfect for entertaining, it showcases wood laminate flooring and 6ft windows throughout. The kitchen boasts quartz countertops, stainless steel GE appliances, and painted white 42" tall cabinetry w/center island w/breakfast bar. Enjoy the spacious breakfast room w/sliding glass door to the backyard. Huge living room with two large windows. Upstairs indulge in the master suite's walk-in closet and private bath with double sinks, linen closet, and a 5ft walk-in shower. Two more bedrooms, a full bath, and second-floor laundry add convenience. Other features include white two-panel interior doors, a powder room, matte black lighting and plumbing fixtures, and more! Located in House Springs, this community features 263 homesites off Bear Creek Road, just east of Gravois Road and Carol Park Road. Enjoy peace of mind with McBride Homes' 10 year builders warranty and incredible customer service! Similar photos shown. Home pricing advertised is lowest price including all of Seller's available promotions. Prices, financing, promotion, and offers subject to change without notice. Some promotions and offers do include using the Seller's preferred Lender & Title Company. Always see the community sales consultant for the latest details.

## Homesite 45 *Berwick*

### LOCATED IN HOUSE SPRINGS

Gravois Road to south on Carol Park Road to left on Bear Creek Road.

New Homes Sales Consultant

**Renee Holder**

[rholder@mcbridehomes.com](mailto:rholder@mcbridehomes.com)

**(314) 574-7090**

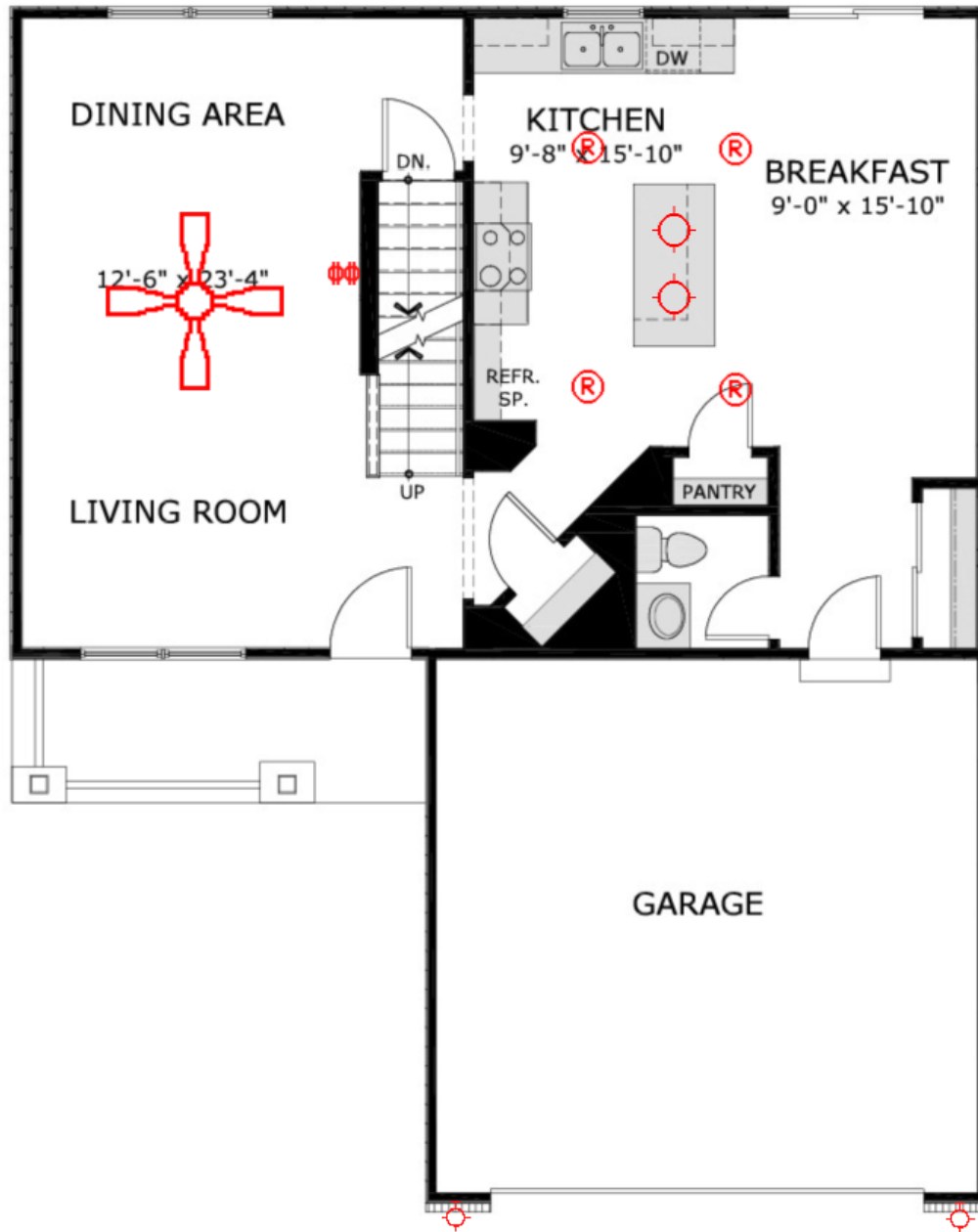


Pricing, availability, and details subject to change without notice.



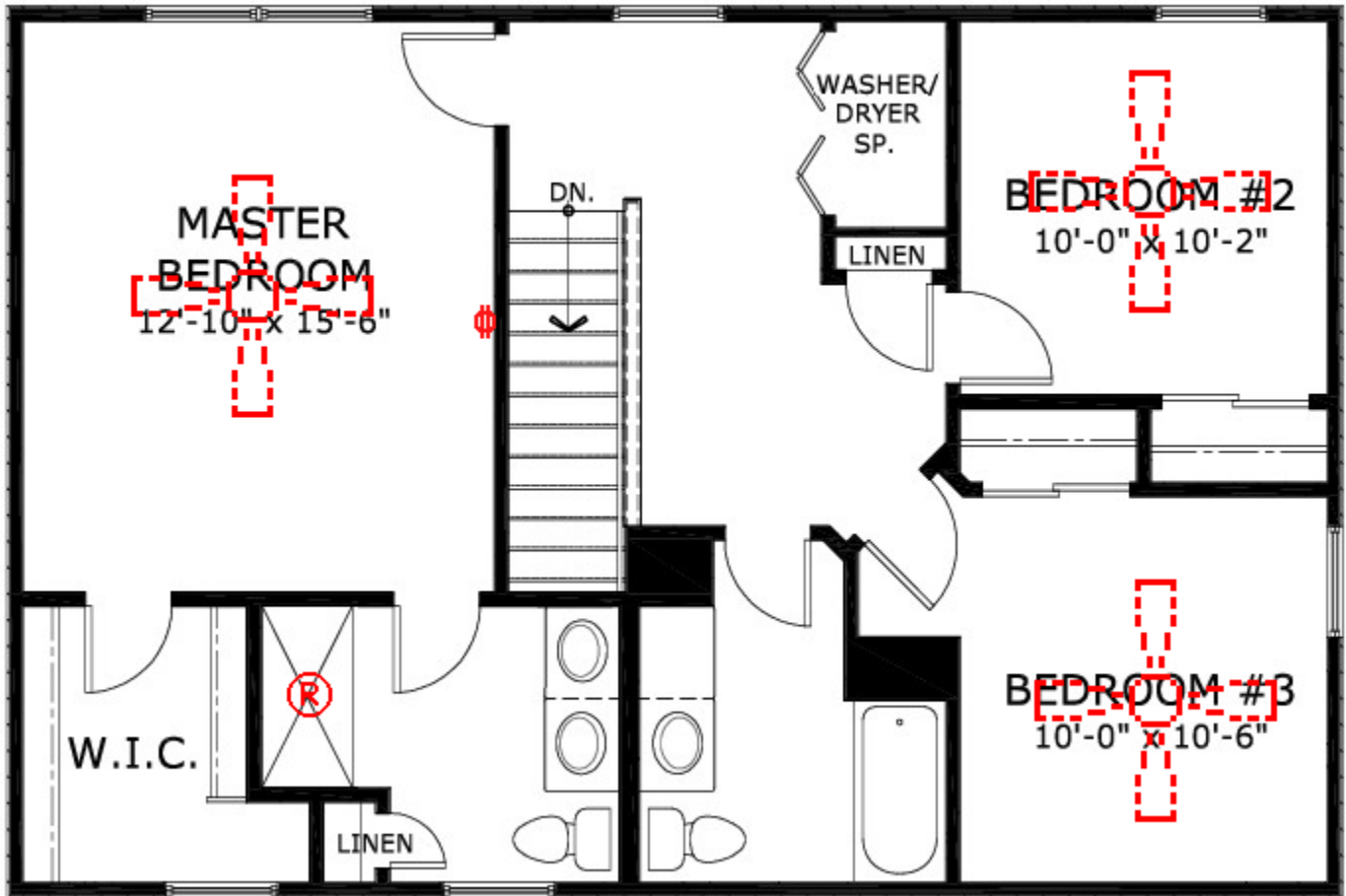
# 4278 BEAR RIDGE DRIVE

**NOTE:** Images shown here represent all elevations and options for the standard floor plan, however, availability of each varies in communities offering this plan.



# 4278 BEAR RIDGE DRIVE

**NOTE:** Images shown here represent all elevations and options for the standard floor plan, however, availability of each varies in communities offering this plan.



Pricing, availability, and details subject to change without notice.



# 4278 BEAR RIDGE DRIVE

**NOTE:** Images shown here represent all elevations and options for the standard floor plan, however, availability of each varies in communities offering this plan.

