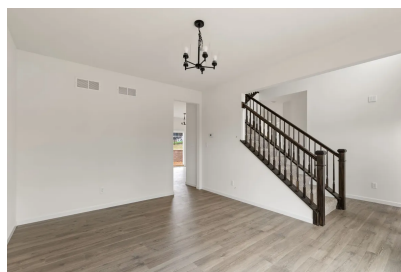


POLO GROUNDS
MANORS



BATHS 2.5 | BEDS 4 | SINGLE FAMILY HOME

NOW \$475,352

1741 MARTINGALE LANE
EUREKA, MO 63025

New McBride Homes Royal II 2-story, 4BR 2.5BA available this spring! Inside you'll find a luxury kitchen with Benton Painted White 42" tall cabinetry, lg center island w/breakfast bar, quartz countertops, stainless steel GE appliances, & corner walkin pantry. The breakfast rm opens to the backyard w/sliding glass door. The main level has a spacious family room w/window wall & ceiling fan, formal dining, laundry, & powder rm. Open spindled staircase to the 2nd floor. Upstairs the master suite has a walkin closet, private lux bath w/double bowl vanity, tub, enclosed toilet, & walkin shower. Plus 3 extra bedrooms & hall bath. Upgraded lighting/plumbing fixtures, & 3/4 bath rough-in at LL. Polo Grounds offers a barn-style clubhouse, playground, pickleball court, fire pit, scenic lake w/fountain & more. Located in Eureka near Highway 109/Hwy FF, in the Rockwood School District. Enjoy peace of mind w/McBride Homes' 10 year builders warranty & incredible customer service! Similar photos shown.

Homesite 42
Royal II

LOCATED IN EUREKA

I-44 to south on Highway 109, right on Highway FF to community entrance on left.

New Homes Sales Consultant

Sandra Kurtovic

skurtovic@mcbridehomes.com

(314) 705-9888

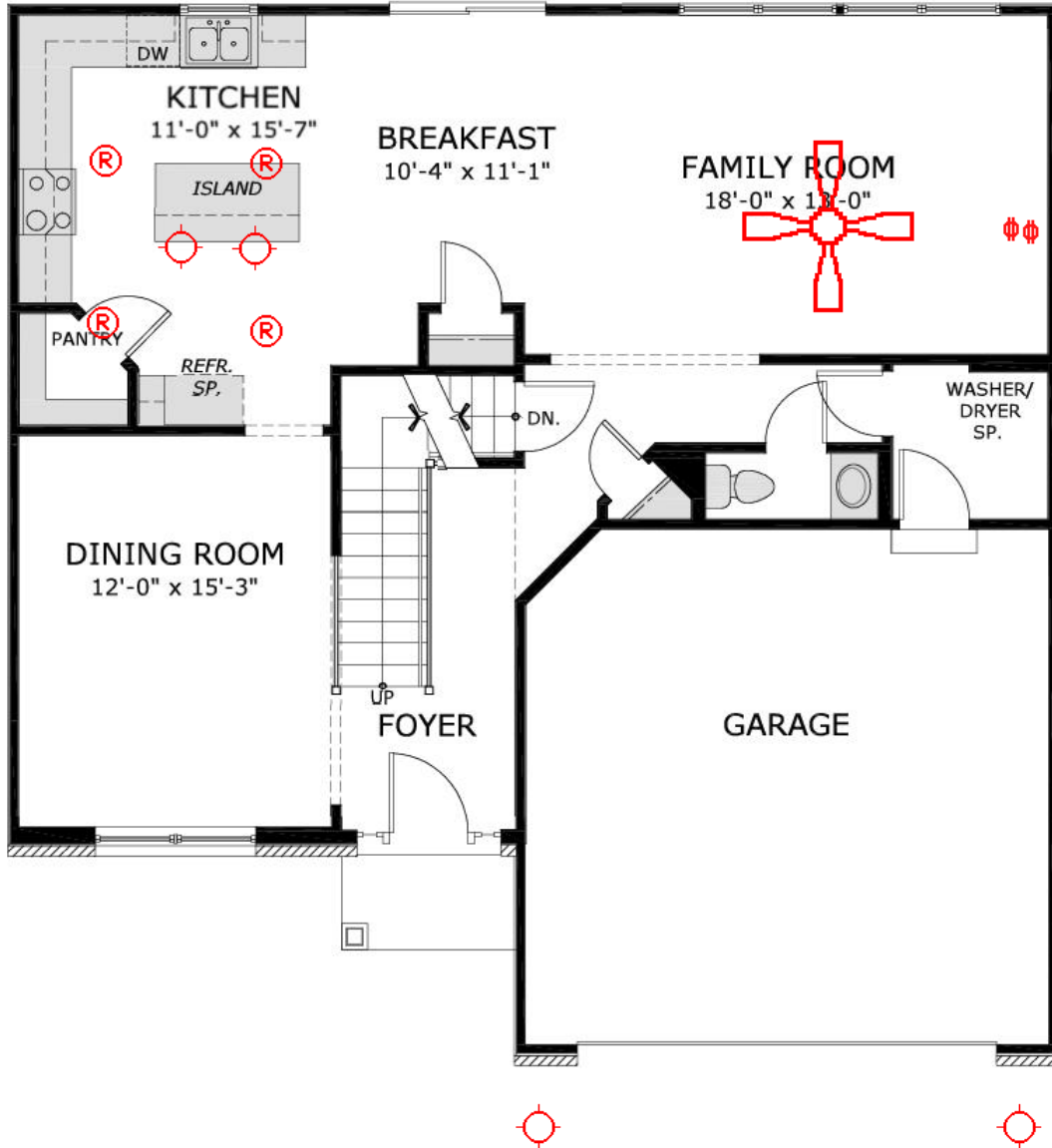


Pricing, availability, and details subject to change without notice.



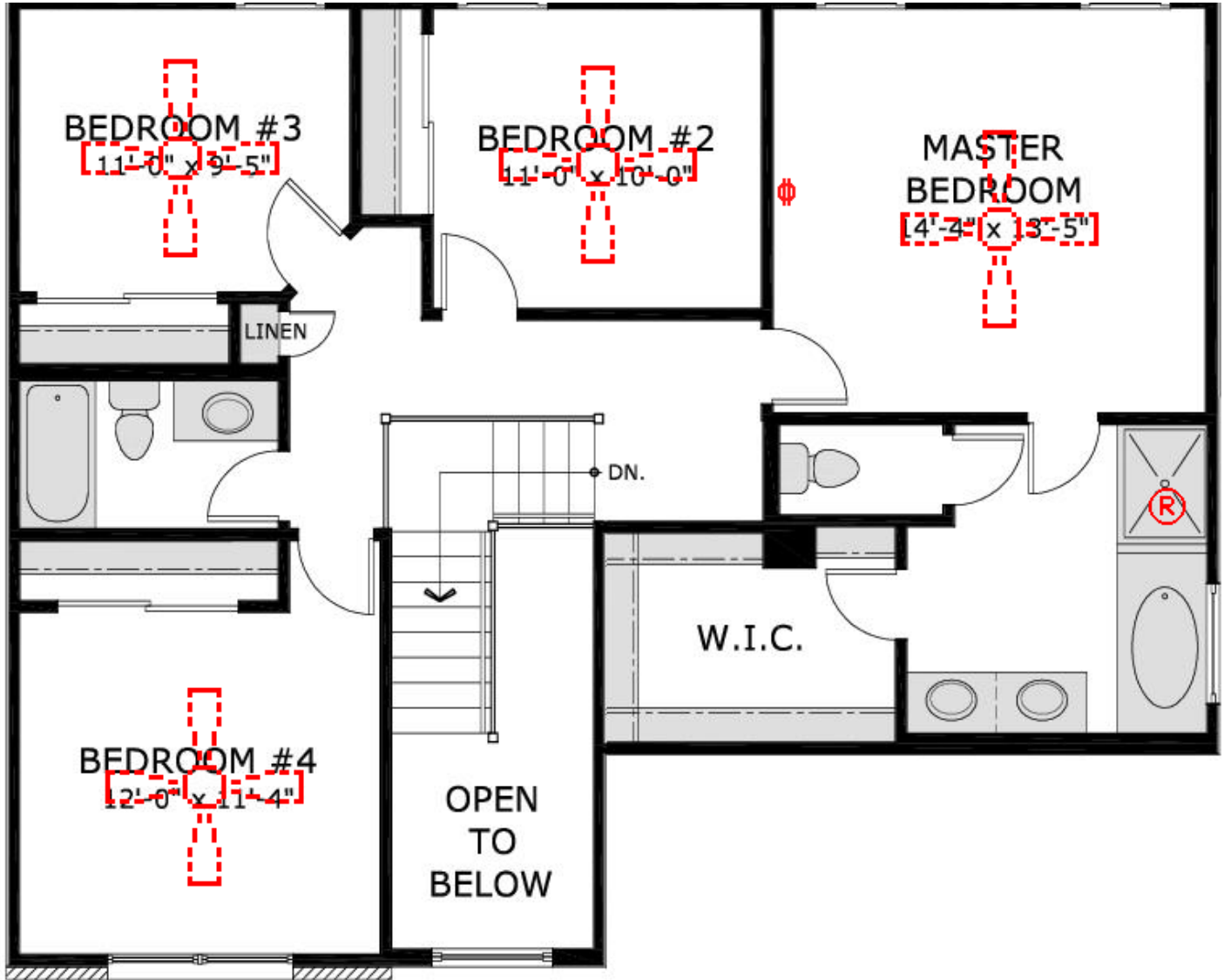
1741 MARTINGALE LANE

NOTE: Images shown here represent all elevations and options for the standard floor plan, however, availability of each varies in communities offering this plan.



1741 MARTINGALE LANE

NOTE: Images shown here represent all elevations and options for the standard floor plan, however, availability of each varies in communities offering this plan.



1741 MARTINGALE LANE

NOTE: Images shown here represent all elevations and options for the standard floor plan, however, availability of each varies in communities offering this plan.

